

LVPECL DIFFERENTIAL OUTPUTS CRYSTAL OSCILLATOR OSC8A



Applications

- SONET / SDH / Gbits / Ethernet
IEEE1394 / Fibre Channel

Features

- Dimensions (5.0 × 3.2 × 1.2)
- Low Phase Jitter / 0.3ps typ. / 12KHz to 20MHz offset
- LVPECL differential outputs with Tri-state function

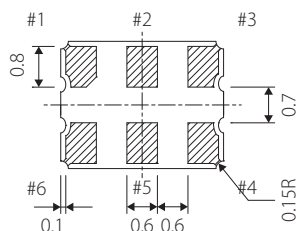
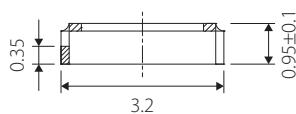
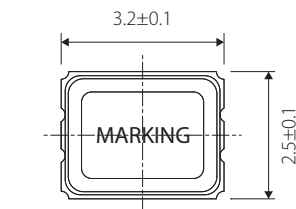
Specifications



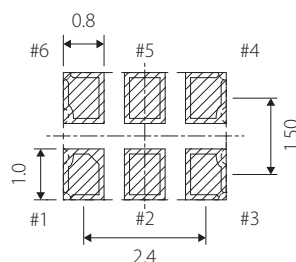
Model	OSC8A
Frequency Range	13.5 ~ 200.0 MHz
Storage Temperature Range	-55 ~ +125°C
Operating Temperature Range	-40 ~ +85°C
Frequency Stability	±30 ppm / ±100 ppm
Power Supply Voltage	2.5V, 3.3V DC ±5%
Current Consumption	45 mA max.
Output Type	LVPECL
Output Load	50Ω (terminus to Vcc-2V)
Output Voltage Level	V _{OL} :V _{CC} -1.620 max. / V _{OH} :V _{CC} -1.025V min.
Rise & Fall time	1 ns max. @20%~80% Output Swing Level
Duty Cycle	45 ~ 55% @50%V _{CC}
Start-up Time	10 ms max.
Phase Jitter	1 ps max. @12KHz to 20MHz
Jitter	5 ps max.@RMS Jitter

Package quantity: 3,000pcs max./Reel.

Outline and Dimensions [unit:mm]



Land Pattern(REFERENCE)



Terminal	Connection
#1	Tri-state or N.C
#2	NC
#3	GND
#4	OUT
#5	OUTN
#6	+Vcc

Tri-state Function	
Tri-state pin	Output
High or Floating	Active
Low	Hi-Impedance